

# Do Fallen Trees Build Character?

## Postlapsarian Knowledge in a Post-Logging Town

Hannah Smay  
ENVS 350 • Spring 2016

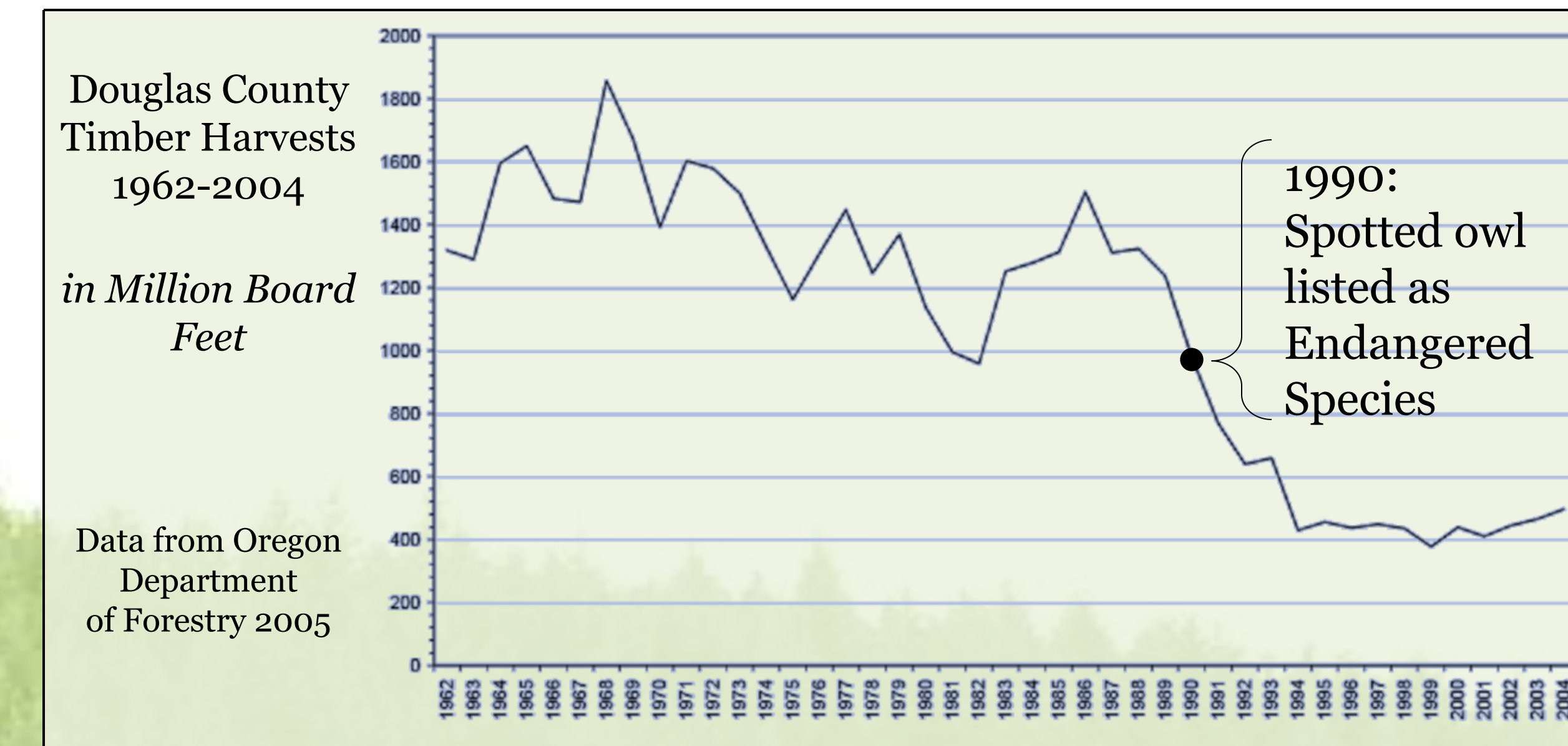
For more information, please visit: [bit.ly/smay\\_350](http://bit.ly/smay_350)

### Selected Theories

- **Postlapsarian:** occurring after or consequent on the fall of mankind (*OED Online*)
  - Are all human interactions with nature “narratives of subsequent loss”? (Massey 2006)
- **Knowledge:** “measures of public trust in science and the perceived meaning of science” (Gauchat 2012)
- **Future:** “[As] precious landscapes and assets fall apart or are lost [there is likely to be] a lot of confusion, a lot of not-knowing, uncertainty, and probably still a good deal of hanging on to hope-against-hope and denial” (Moser 2012)

### Histories of Loss in Douglas County

- O&C lands managed by BLM
  - 50% DC managed by federal government
- Logging Industry
  - Spotted owl habitat loss campaign
  - 1980s & 1990s: Logging industry diminished
  - Social loss, economic loss, nostalgia
- Demographic shifts: influx of retirees & millennials replacing logger generation



### Questions

**How do communities use knowledge to cope with loss?**

**How do residents of Douglas County use different types of knowledge in their visions for the future?**

### Methods

#### Interviews & Meetings

- Political, social, cultural, and economic leaders
  - County officials
  - Museum director
  - Business owners

#### City Center Landscape

- Observed age and type of businesses through DT Roseburg
- Visited DT breweries to analyze advertising and demographic

#### Primary Sources

- Verve Magazine
- Websites of Umpqua Watersheds & Oregon Wild



### Results

|                      | Historical Knowledge  | Scientific Knowledge  | Social Knowledge   |
|----------------------|---|---|--|
| Young Entrepreneurs  | <ul style="list-style-type: none"> <li>• Brewing &amp; agriculture heritage</li> <li>• History of loss to prove resilience, build character</li> </ul>        | <ul style="list-style-type: none"> <li>• Great beer, wine, &amp; food made by quality water, climate, soil, etc.</li> </ul>                 | <ul style="list-style-type: none"> <li>• Revitalization and rebirth of community, create spaces of positivity</li> </ul> |
| County Officials     | <ul style="list-style-type: none"> <li>• Logging heyday of 1960s-1970s remembered with utopian nostalgia</li> </ul>   | <ul style="list-style-type: none"> <li>• “Faithful stewardship” and forestry in logging promotes ecosystems</li> </ul>                      | <ul style="list-style-type: none"> <li>• Universal need for public amenities</li> <li>• Demographic shifts</li> </ul>    |
| Environmental Groups | <ul style="list-style-type: none"> <li>• Narrative of progress</li> <li>• Past victories paved the way for current focus on “proactive solutions.”</li> </ul> | <ul style="list-style-type: none"> <li>• Ecology used to fight for “critical habitat”</li> <li>• Conservation by “sound science”</li> </ul> | <ul style="list-style-type: none"> <li>• Balance between social needs and environmental protection</li> </ul>            |

### Theoretical Implications?

- Stories about fallen trees construct place and identity
  - Place through imagination and memory of loss
  - Place through imagination and hope for the future
- Narratives of progression, collapse, and progression contingent on collapse
- Scientific & social knowledge politicized
- Social & historical knowledge commodified

#### Selected References

- Flores, Michele Matassa. 2015. “Roseburg, Oregon: A Community of Contradictions.” *The Seattle Times*, October 17.
- Gauchat, Gordon. 2012. “Politicization of Science in the Public Sphere: A Study of Public Trust in the United States, 1974 to 2010.” *American Sociological Review* 77, no. 2: 167–87. Accessed April 9, 2016. doi:10.1177/0003122412438225.
- Massey, Doreen. 2006. “Landscape as a Provocation: Reflections on Moving Mountains.” *Journal of Material Culture* 11, no. 1–2: 33–48.
- Mooney-Melvin, Patricia. 1991. “Harnessing the Romance of the Past: Preservation, Tourism, and History.” *The Public Historian* 13, no. 2: 35–48.
- Moser, Susanne C. 2012. “Getting Real about It: Meeting the Psychological and Social Demands of a World in Distress.” In *Environmental Leadership: A Reference Handbook*, by Deborah Gallagher, 900–908. Thousand Oaks, CA: SAGE Publications, Inc.
- Oregon Wild. 2016. “Western Oregon BLM Backyard Forests.” <http://www.oregonwild.org/forests/forest-protection-and-restoration/backyard-forests>.
- OED Online. 2016. “post-lapsarian, n. and adj.,” Last modified March. Oxford University Press.